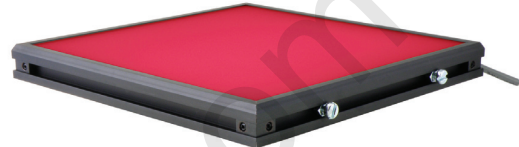




Distributed By: Audio Video Supply -- Tel: 1-800-284-2288 -- www.avsupply.com

BL0808

8" x 8" Surface Mount LED Back Light



- 4i** Extremely consistent light over the entire active area of illumination.
- 4i** Integral M6 nut channel for easy mounting.

Ordering Information

Standard Product:
Shipped Next Day

BL0808-66024

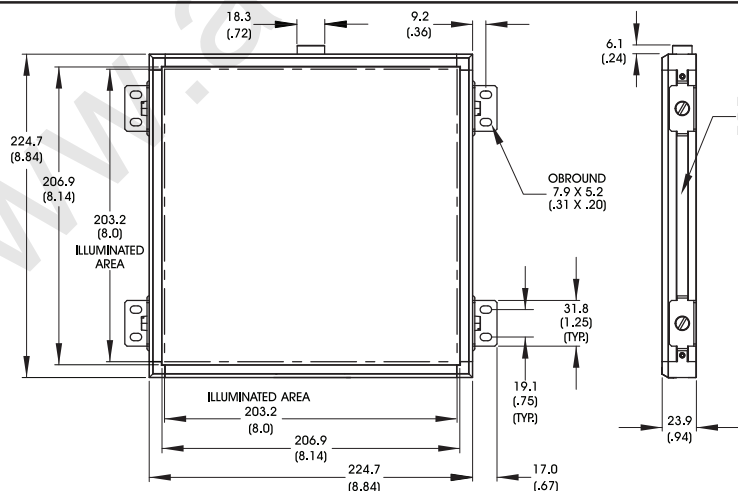
Configured for use with user supplied 24vDC Power Supply

Standard Product Variation:
Red & Infra-red: Shipped Within 2 Weeks
White: 3 Weeks **Blue & Green:** 4 Weeks

BL 08 08	-	XXX	XX	X	XXX
		Spectral wavelength	Optional power Compatibility	Optional Light Conditioning	Alternative Connector
		(blue) 470	IC	P ^ε	M12*
		(green) 520	C3	(Polarizer)	(4-pin male)
		(red) 660	C5		
		(infra-red) 880	24		
		(white) WHI			

IC = iCS (requires 24v power supply)
C3 = Pulsar 710 Connector
C5 = Pulsar 320 Connector
★ Available with IC, and 24v options only
ε = Polarizer is oriented perpendicular to the cable exit side of the light

Dimensional Information



[Click for Installation Models & Drawings](#)

DIMENSIONS ARE IN MILLIMETERS (INCHES)

Cable Length: 1.5 Meter (59")

Standard Variation Current Specifications

	blue	green	red	infra-red	white	
@24	1.28	1.28	1.92	1.92	1.28	A

Standard Product Information

Finish: Black Anodized
Operating Temperature: 0-60° C
Meets Specifications: CE, RoHS

LED products provide a lifespan significantly greater than other vi

advancedillumination.com

For design help, accessories or pricing, please contact:
sales@avsupply or call: 1-858-565-1101

AUDIO VIDEO SUPPLY

1-800-284-2288 sales@avsupply.com
www.avsupply.com