



SX-15

A sharp surveillance display for 24/7 security environments that demand durability and long-term performance, but where space is at a premium.

The SX-15 is a highly durable 15" display that is perfect for tight quarters. In multi-user security environments, a strong metal casing and NeoV™ Optical Glass protect the display from day-to-day use and other incidental damage. The SX-15 also provides important features such as looping video inputs for multiple connections, Anti-Burn-in™ technology, Mask Mode and a quick signal-switching time that are essential for security and surveillance environments.

- > NeoV™ Optical Glass
- > Distinctive bezel design and durable metal casing
- > Anti-Burn-in™ technology to prevent image sticking
- > Mask Mode to reduce image distortion
- > Quick signal-switching time (≤ 0.8 sec.)
- > Real-time image display with no time lag
- > Automatic recovery of video settings after power interruptions
- > Video looping output supports auto termination
- > Supports NTSC/PAL/SECAM video systems
- > Auto-adjustment when VGA input is selected
- > Kensington® security socket
- > VESA standard wall mount
- > Rigorous screening of the components for mission-critical 24/7 applications



NeoV™ Optical Glass - The most trusted hard glass protection available. Only on AG Neovo displays



SX-15

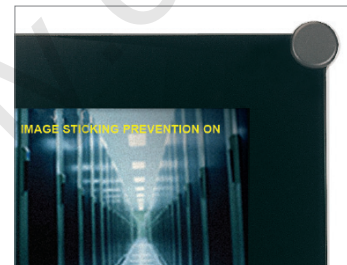
Specifications

SX-15

Panel	Panel Type	TFT LCD
	Panel Size	15.0" (381 mm)
	Max. Resolution	XGA 1024 x 768
	Pixel Pitch	0.297 mm
	Brightness	320 cd/m ² (Typical)
	Contrast Ratio	500:1 (Typical)
	Viewing Angle (H/V)	140°/125° (Typical)
	Display Colour	16.7M
	Response Time	4 ms (GTG)
	Horizontal Resolution	TV Lines
Frequency (H/V)		H: 30 kHz - 60 kHz V: 56 Hz - 75 Hz
Input	Analogue	15-Pin D-Sub
	Digital	24-Pin DVI-D
	BNC Security	BNC Connector
Input Signal	Analogue	RGB H.V Sync
	Digital	TMD5
	Composite	NTSC/PAL/SECAM
Output Connector	BNC Security	BNC Connector
Power	Power Supply	External
	Power Requirements Consumption	DC 12V < 36 W (On) < 2 W (Off)
NeoV™ Optical Glass	Thickness	3.0 mm (0.12")
	Reflection Rate	< 1%
	Transmission Rate	> 96%
	Coating Hardness	> 9H
Plug & Play	VESA	DCC 2B, DCC/CI
Operating Conditions	Temperature	0 °C ~ 40 °C
	Humidity	10% ~ 90%
Storage Conditions	Temperature	-20 °C ~ +60 °C
	Humidity	5% ~ 95%
Mounting	VESA FPMPMI	Yes (100 x 100mm)
Tilt	Tilt	0° ~ +20°
Dimensions	Product (W x H x D)	380 x 359 x 155 mm (15.0" x 14.1" x 6.1")
	Packaging (W x H x D)	445 x 477 x 217 mm (17.5" x 18.8" x 8.5")
Weight	Product Weight	4.8 kg (10.6 lbs)
	Packaged Product Weight	7.0 kg (15.4 lbs)
Regulation Approval	Certifications & Compliance	TUV/Bauart, CB, FCC, CE, CCC, CEL, GOST-R, WEEE, RoHS, Vista/Basic, REACH
Accessories	Supplied	CD ROM (user manual and drivers), power cord, power adaptor, 15-Pin D-Sub cable, 24-Pin DVI-D cable, CVBS BNC connector cable



NeoV™ Optical Glass for hard glass protection and strong metal casing for secure mounting



Anti-Burn-in™ technology prevents image sticking



Specifically designed and tested for commercial video security applications



Looping BNC video connector for multiple display connections



Distributed By: Audio Video Supply -- Tel: 1-800-284-2288 -- www.avsupply.com



All specifications are subject to change without prior notice.
Copyright © 2013 AG Neovo. All rights reserved. The name AG Neovo is a trademark of AIC.
All other trademarks are the property of their respective owners.
P/C: SX15G0_SX5G1 Version 25.3, 20130701

For design help, accessories or pricing, please contact:
sales@avsupply or call: 1-858-565-1101