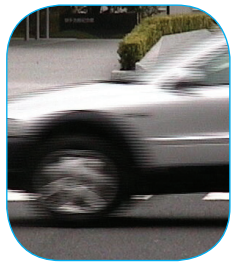




1x wide angle



40x (maximum) zoom



Interlaced Scan



Progressive Scan



Original



Smart Shade Control



GENUINE CANON OPTICS:

- 40x Optical Zoom – one of the industry's most powerful – lets you see intricate detail even at great distances.
- Wide 56° horizontal field of view allows for monitoring of larger areas.
- Auto Focus ensures that objects in the foreground and background are in focus during panning, tilting, or zooming.

PAN/TILT/ZOOM:

- Extremely wide pan and tilt range provides full 360° horizontal coverage: Pan: ±170°, Tilt: -25° / +90°, +25° / -90° (Reverse Mode).

IMAGE STABILIZATION:

- Compensates for blur caused by shaking of camera when mounted on ceilings, poles or other places subject to vibration.

PROGRESSIVE-SCAN CCD:

- Captures noiseless, high-quality video of moving subjects.

SMART SHADE CONTROL:

- If the background of an image is too bright to see main subjects, you can adjust the contrast of the darker areas to make it easier to see.

POWERFUL DIGIC NET PROCESSOR:

- DIGIC NET performs all image processing and encoding, resulting in simultaneous data distribution with no loss in frame rate.
- Image capture can be delivered in both M-JPEG and MPEG-4 video at 30fps.

AUTO DAY & NIGHT MODE:

- Switches automatically for variable lighting conditions.
- Capture 30fps color video in as little as 0.7 lux of illumination.

MOTION DETECTION WITH SUBJECT AUTO-TRACKING:

- When motion is detected, the camera can follow the subject's movement and automatically send the image to a cell phone or email address.

TWO-WAY AUDIO:

- Transmit real time audio both to and from an authorized network PC.
- Administrators can simultaneously listen in and make announcements to a camera site.

PoE (POWER OVER ETHERNET) IEEE802.3af COMPLIANT:

- Receive both data and power through a single Ethernet cable.



VB-C60

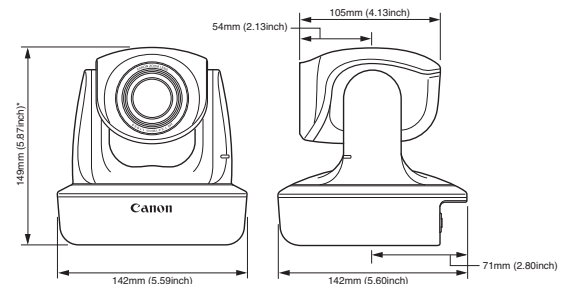
PAN/TILT/ZOOM NETWORK CAMERA

Product Name	VB-C60
Item Code	2812B015
UPC Code	013803099478

Specifications	
CCD IMAGE SENSOR	1/4 in. CCD (Primary Color Filter)
NUMBER OF PIXELS	310,000 Effective Pixels
SCANNING METHOD	Progressive
LENS	
Zoom Ratio	40x Optical with Auto Focus (4x Digital)
Focal Length / F-Stop	f=3.4mm (W) ~ 136.0mm (T) / F1.6 (W) ~ F5.6 (T)
ANGLE OF VIEW	
Pan Range / Tilt Range	55.8° (W) ~ 1.5 (T) / 43.3° (W) ~ 1.1 (T)
DAY/NIGHT MODE	Auto / Manual
IR CUT FILTER	Yes
MINIMUM ILLUMINATION	
Color	0.7 lux @ 1/30 second Shutter Speed
Black & White	0.2 lux @ 1/30 second Shutter Speed
FOCUS	Auto / One-shot AF / Manual Fixed Focus at Infinity (for dome use)
FOCUS RANGE	
Day Mode	(W) 11.8in. ~ infinity/ (T) 59in. ~ infinity
Night Mode	(W) 19.7in. ~ infinity/ (T) 70.9in. ~ infinity
SHUTTER SPEED	1/1 ~ 1/8000 second
WHITE BALANCE	Auto / One-shot / Preset / Manual
OPTICAL MEASUREMENT SYSTEM	Center-weighted / Average / Spot
EXPOSURE COMPENSATION	7 Levels
SMART SHADE CONTROL	Yes
IMAGE STABILIZER	Electric (ON1 / ON2 / OFF)
PAN ANGLE RANGE	340° (±170°)
TILT ANGLE RANGE	
Upright / Ceiling-Mounted	115° (-25° ~ 90°) / 115° (-90° ~ 25°)
MOVING RATE	PAN / TILT: Maximum 150° / second
VIDEO COMPRESSION METHOD	JPEG (for video: M-JPEG) / MPEG-4
OUTPUT IMAGE/VIDEO SIZE	JPEG: 640x480 / 320x240 / 160x120 MPEG-4: 640x480 / 320x240
FRAME RATE	M-JPEG: 0.1 ~ 30fps MPEG-4: 30 / 15 / 10 fps
MAXIMUM FRAME RATE	M-JPEG: 30 fps (640x480) x 1 MPEG-4: 30 fps (640x480) x 1
SIMULTANEOUS CLIENT ACCESS	M-JPEG: 30 clients MPEG-4: 10 clients
AUDIO COMMUNICATION	
IPsec	Available
PRESETS	Maximum 20 Positions
MOTION DETECTION	Yes, up to 4 detection areas can be set.
JPEG IMAGE UPLOAD	FTP / HTTP / SMTP
EVENT NOTIFICATION	HTTP / SMTP
NETWORK	LAN x1 (RJ-45, 100Base-TX), IEEE 802.3af
AUDIO TERMINALS	
Input	1-Mini-Jack Connector (Monaural) LINE IN or MIC IN
Output	1-Mini-Jack Connector (Monaural) LINE OUT
EXTERNAL DEVICE I/O TERMINAL	Input x2, Output x2
OPERATING ENVIRONMENT	
Temperature / Humidity	14° - 122° F / 20 ~ 85% RH (No Condensing)
POWER SUPPLY	
PoE	Via LAN Connector (IEEE802.af compliant)
Optional AC Adapter	AC 100V - 240V (PA-V17)
Optional External Power	AC 24V / DC 12V (non-polar)
POWER CONSUMPTION	
with PoE	Maximum approximately 10W
with Optional AC Adapter	Maximum approximately 13W
BUNDLED SOFTWARE	
Web Viewer	Built-In (no Java applet necessary)
VK-Lite	Free 4-camera license included
WEIGHT	Approximately 1.85 lbs.
DIMENSIONS (W x D x H)	5.59in. x 5.59in. x 5.87in.

Kit Contents	
Items	VB-C60 Network Camera
	Power Connector
	Setup CD-ROM
	Start Guide
	Warranty Card
Package Information	
W x D x H	8.58in. x 8.58in. x 8.70in.
WEIGHT	3.97 lbs.
Optional Accessories	
Item Code	Description
2823B001AA	VB-RD5IS-S Indoor Recessed Dome Housing (Smoked)
2823B002AA	VB-RD5IS-C Indoor Recessed Dome Housing (Clear)
3121B002AA	SS60-B-VB Ceiling Mount Cover
2245001AA	PA-V17 AC Adapter
Optional Software	
3099B001	VK-64 v2.0 (Network Video Recording Software)
3099B002	VK-16 v2.0 (Network Video Recording Software)
3099B003	VK-Viewer v2.0 (1 License for VK-64/16 Viewer)
3099B004	VK-Viewer v2.0 (5 Licenses for VK-64/16 Viewer)
3331B001	VK-Lite (1 License for VK-Lite)

VB-C60 MEASUREMENT CHART



Canon
image*ANYWARE*

1-800-OK-CANON
usa.canon.com/nvs

Canon U.S.A., Inc.
One Canon Plaza
Lake Success, NY 11042 U.S.A.

Canon Canada Inc.
6390 Dixie Road
Mississauga, Ontario L5T 1P7 Canada

Canon Latin America
703 Waterford Way, Suite 400
Miami, FL 33126 U.S.A.

Canon Mexicana, S. de R.L. de C.V.
Bldv. Manuel Ávila Camacho
No. 138, Piso 17
Col. Lomas de Chapultepec
C.P. 11000 México, D.F. México

All prices, specifications, and availabilities subject to change without prior notice.

Canon is a registered trademark of Canon Inc.
IMAGEANYWARE is a trademark of Canon.

MPEG-4
NOTICE ABOUT THE MPEG-4 VISUAL STANDARD: THIS PRODUCT IS LICENSED UNDER THE MPEG-4 VISUAL PATENT PORTFOLIO LICENSE FOR THE PERSONAL AND NON-COMMERCIAL USE OF A CONSUMER TO (i) ENCODING VIDEO IN COMPLIANCE WITH THE MPEG-4 VISUAL STANDARD ("MPEG-4 VIDEO") AND/OR (ii) DECODING MPEG-4 VIDEO THAT WAS ENCODED BY A CONSUMER ENGAGED IN A PERSONAL AND NON-COMMERCIAL ACTIVITY. NO LICENSE IS GRANTED OR SHALL BE IMPLIED FOR ANY OTHER USE. ADDITIONAL INFORMATION INCLUDING THAT RELATING TO PROMOTIONAL, INTERNAL AND COMMERCIAL USES AND ADDITIONAL LICENSING MAY BE OBTAINED FROM MPEG LA, LLC. SEE [HTTP://WWW.MPEGLA.COM](http://www.MPEGLA.COM).

usa.canon.com/nvs