

## VS-WC363

## NTSC / PAL, 36x Zoom, Rugged IR PTZ Camera



- 1/4" 613K pixels SONY Super HAD dual scan CCD
- 700TV lines of highest resolution - HR7 mode
- Progressive scan 612,688 pixels
- Optical 36x power zoom and 32x digital zoom
- Dual scan 512x WDR
- 1/4" Exview HAD CCD, Sony optical 36x zoom with WDR
- 12pcs of 18ø IR LED (120m manual focusing)
- High-powered 36x optical zoom
- Light distance: 80m (manual focusing)
- IP66 Outdoor Application
- Endless Pan rotation (-22.5°~ 90° tilt angle)
- Up to 63 programmable presets
- Less than 0.1° Preset Accuracy
- 8 programmable Tour, 4 Pattern
- Alarm - Move the camera to programmed Preset position with Alarm trigger. (Max. 2)
- 4 Scan (Programmable speed and diagonal scan)
- Programmable Privacy Masking (2 Zones)
- RS-422, RS-485 communication
- Multiple protocol PELCO-D, PELCO-P
- Built-in Menu System for Setup of Programmable Functions
- Mechanical Auto Flip
- Programmable Zoom Speed (Optional Update tool)
- DC 12V, 1.5A with Optional 24V AC power Input

**NTSC / PAL  
Composite  
Video Output**



**V-PS12-5V**  
Power Supply included



### IR Light Function

Its built-in 12pcs of 18ø IR Lens provide visible distance of up to 120m in the dark (manual focusing).

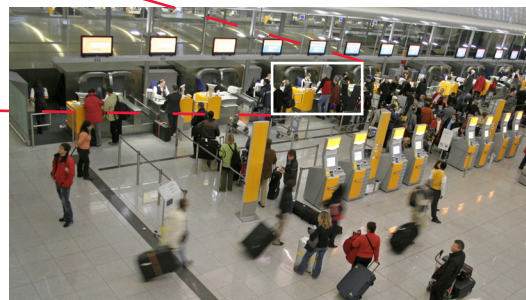
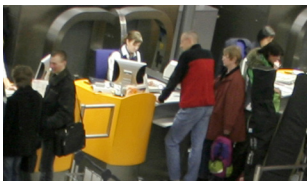


- 36X Optical Zoom
- 32X Digital Zoom



### WDR (Wide dynamic range)

The Camera delivers clear, high quality pictures even when the subject is backlit. By increasing exposure in dark areas while simultaneously decreasing it in bright areas results in a corrected image with clear details.



### 36x Optical Zoom

The built-in 36 Optical zoom lens with auto-focus is combined with a 32x digital zoom providing a maximum of 1152x zoom.



## Auto ICR

This camera offers optimal sensitivity in both day and night shooting applications. At a preset level of darkness, the IR-cut filter is automatically disabled (ICR ON) and the near-infrared sensitivity is increased. At a preset level of brightness, the filter is automatically enabled (ICR OFF). The IR-cut filter automatically engages depending on the ambient light, allowing the camera 24/7 operation in a variety of lighting conditions.

## VS-WC363 Specifications

| MECHANICAL         |   | Light distance        | 120m (manual focusing)  |
|--------------------|---|-----------------------|---|
| Pan                | 360° Endless Pan / 0.1° to 100°/sec.                      | VIDEO                 |   |
| Tilt               | -22.5° to 90° angle, 64 steps proportional to zoom        | Video Out             | 1.0 Vp-p (75ohm, composite)   |
| Pan Preset Speed   | 110°/sec, 0.1° Accuracy                                   | CERTIFICATION         | CE, FCC CLASS A, RoHS   |
| Weight             | 2.7kg   | CAMERA                |   |
| Dimensions         | 138(Ø) x 205.81(H) mm                                     | Image Sensor          | 1/4" SONY Super HAD II CCD (Double Screen)                              |
| ENVIRONMENTAL      |   | Zoom                  | Optical 36x, Digital 32x  |
| Construction       | Aluminum  | Total Pixels          | NTSC: 1028 (H) x 508 (V) / PAL: 1028 (H) x 596 (V)                      |
| Ingress Protection | IP66  | Scanning Frequency    | NTSC: 15.734 KHz (H), 59.94 Hz (V)<br>PAL: 15.625 KHz (H), 50 Hz (V)    |
| Color              | Black or Cool Gray  | Sync System           | Internal  |
| Operating Temp     | -20°C to 50°C (Fan & Heater power ON)                     | Min. working distance | 10 mm (WIDE end), 800 mm (TELE end)                                     |
| FUNCTIONS          |   | Sync system           | Internal  |
| Preset             | 63 points, less than 0.1° accuracy                        | Resolution            | 700TV lines (Color)<br>800TV lines (BW)                                 |
| Tour               | 8 programmable  | Min. Illumination     | Color: 0.5 lux, BW: 0.2 lux<br>Color DSS: 0.001 lux, BW DSS: 0.0004 lux |
| Pattern            | 4 patterns  | Image DNR             | Off / Manual / Auto   |
| Flip               | Mechanical / Auto / Off<br>(Rotate 90° at bottom of tilt) | Focus Distance        | 50 dB (Weight ON)   |
| Auto Scan          | 4 (programmable speed and diagonal scan)                  | S/N Ratio             | More than 50dB (AGC off)  |
| Privacy Zone       | 2 blocks with title (Masking / Video off)                 | Focal Length          | f= 3.4mm ~ 122.4mm (F 1.6 to 4.5)                                       |
| Address            | Up to 255 selectable ID (Rotary switch)                   | Focus                 | Auto  |
| Data Communication | RS-485 / RS-422   | Communication         | Baud Rate: 2400/4800/9600/19200/38400<br>Protocol: Pelco-D / Pelco-P    |
| Protocol           | Multiple protocol   | E.Zoom                | Off / Max 2x ~ 32x  |
| Baud rate          | 2400, 4800, 9600, 19200, 38400, 57600,<br>115200 bps      | Exposure              | Auto / Shutter PRI / Manual   |
| Alarm In           | 2 alarm (NO/NC, Priority)                                 | Display               | Disp Sel / Init Sel / Set Tilt / Set Init Msg / Language                |
| Alarm Out          | 2 relay out (Hold, Latch)                                 | Gain Control          | Off / On (Auto Max 32dB)  |
| Display            | Zone title on/off (start / end zone)                      | Shutter Speed         | NTSC: 1/60 ~ 1/100,000 sec<br>PAL: 1/50 ~ 1/100,000 sec                 |
| ELECTRICAL         |   | WDR / BLC             | Off / WDR / BLC   |
| Power              | DC 12V, 22W, 1.5A (with extra IR 3A)                      | Day & Night           | Auto / Sens-in / Ext / Day / Night                                      |
|                    | V-PS12-5V Power Supply included                           | White Balance         | ATW / One-Push / Indoor / Outdoor / Manual / Auto                       |
|                    | IR: 1.9A (23W) (Fan & Heater ON)                          |                       |   |
| Light              | 12pcs of 18Ø IR LED                                       |                       |   |

## Accessories



**VS-TKC-100**  
PTZ Keyboard Controller

Features, specifications, pricing, and dimensions are subject to change without notice.  
Physical appearance of products may vary slightly from images shown on this document. Please visit our website for updates and information.